

Due: _____ Test on : _____

Name: _____ Date: _____

GEOMETRY UNIT STUDY GUIDE - COMPLETE ON SEPARATE SHEET OF PAPER

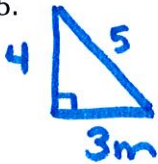
Lesson 1:

Graph each point, connect the dots, then find the area of each figure.

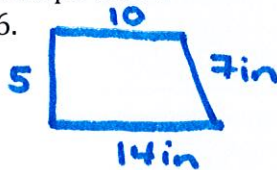
1. (1,2), (10, 2), (5,7)
2. (-9, -5), (-9, 5) (-3, -5), (-3, 5)
3. (-6,5) (0, 5) (0,2) (5,2) (5, -3) (-6, -3)
4. (2, 8), (8,4), (8, -4), (2, -4)

Find the area and perimeter of each shape below

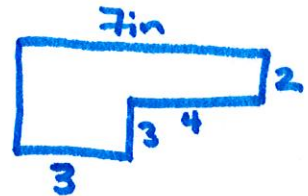
5.



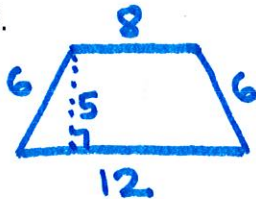
6.



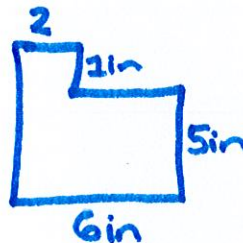
7.



8.



9.



10.



Lesson 2:

11. Sketch the net of each prism

A.



B.



C.



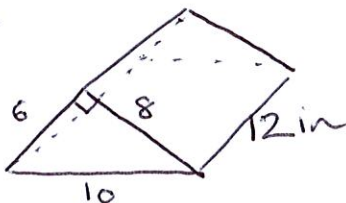
D.



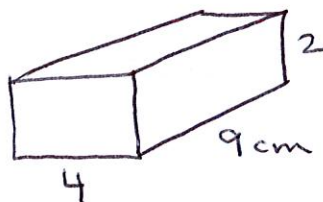
Lesson 2/43

Find the area and volume of each prism.

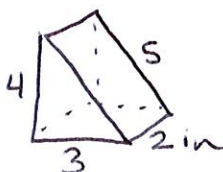
12.



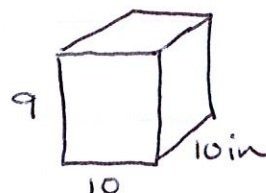
13.



14.



15.



16.

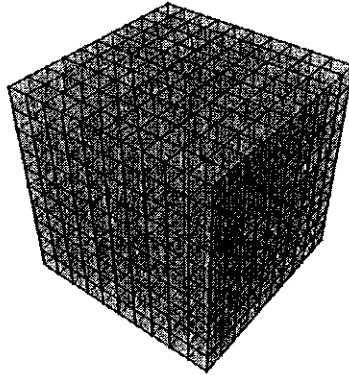
Meg used $\frac{1}{2}$ -inch cubes to build a cube that measured $4\frac{1}{2}$ inches in length, width, and height.

- a. How many $\frac{1}{2}$ -inch cubes long is each edge of her cube? _____
- b. How many $\frac{1}{2}$ -inch cubes did she use in all? _____
- c. What is the volume of the cube Meg built? _____.

17.

Find the volume of the cube below if each small cube measures:

- a. 1 inch x 1 inch x 1 inch _____
- b. $\frac{1}{2}$ inch x $\frac{1}{2}$ inch x $\frac{1}{2}$ inch _____
- c. $1\frac{1}{2}$ inches x $1\frac{1}{2}$ inches x $1\frac{1}{2}$ inches _____



★ It is strongly recommended that you review and study your HW, notes, ^{quizzes} and tasks as well. Your test is mostly word problems that rely on the skills practiced on this study guide.